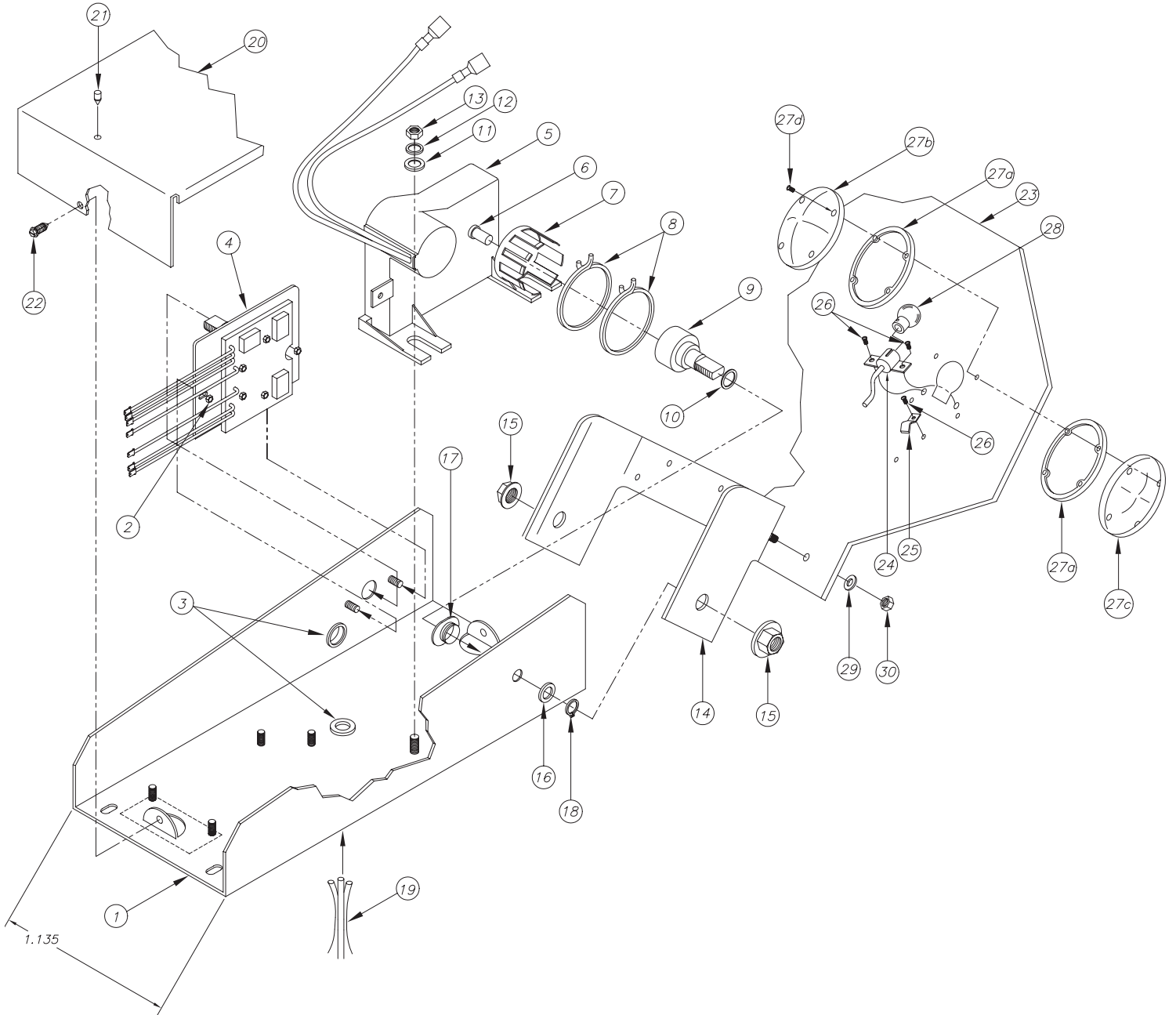


STOP ARM PARTS

SENTINEL ELECTRIC





STOP ARM PARTS

SENTINEL ELECTRIC

ITEM NO.	SMI P/N	QTY.	DESCRIPTION
	005110M*		Sentinel Stop Arm Base Assembly
1	005101	1	Base, Painted with Studs
2	005832	2	Insert Hex Nut, Nylon 8-32
3	003027	2	Grommet
4	005150-L	1	Module, Sentinel Electric – w/ Leads
5	005014	1	Motor
6	005065	1	V-Seal
7	005003	1	Clutch, Plastic
8	005030	2	Roto Clip
9	005002	1	Slip Clutch, Aluminum
10	005032	1	O-Ring
18	005176	1	Bushing, Nylon
11	000147	2	Washer, Flat ¼"
12	000148	2	Washer, ¼ Split Lock
13	000143	2	Nut, ¼-20 Hex
14	005168	1	Hinge Bracket
15	005122	2	Nut, ½-20 Hex Washer Whiz
16	005164	1	Washer, 1" O.D. SS
17	005176	1	Bushing, Nylon
18	005165	2	Snap Ring
19	006117	1	Wiring Harness
20	005125	1	Cover
21	000177	5	Rubber Bumper
22	000137S	4	Screw, #10 x ½" SMS Serrated
23		1	Blade Choice (contact distributor)
24	005189	2	Socket & Pigtail
25	000198	4	Tube Clamp – Molded
26	000192	8	Screw, Self-Tapping
27	000194K	2	Lens Kit, Red (inc. following parts)
27a	000193SAE	4	Lens Gasket
27b	000194	2	Lens, Red Solid
27c	000194-C	2	Lens, Red Cut-Out
27d	000185ST-F	8	Screw, Hex Head
28	001156DC	2	Bulb, Double-Contact
29	000104	4	Washer, Nylon
30	000142	4	Nut, ¼-20 Nylon Insert

* **Note:** OR 005160M, Base Assy with Power Pack for Stop Arms with Strobing Lights

Replacement Parts Not Shown

005008	1	Clutch Assembly (items 7, 8, 9, 10)
005126	1	Adapter, Windguard