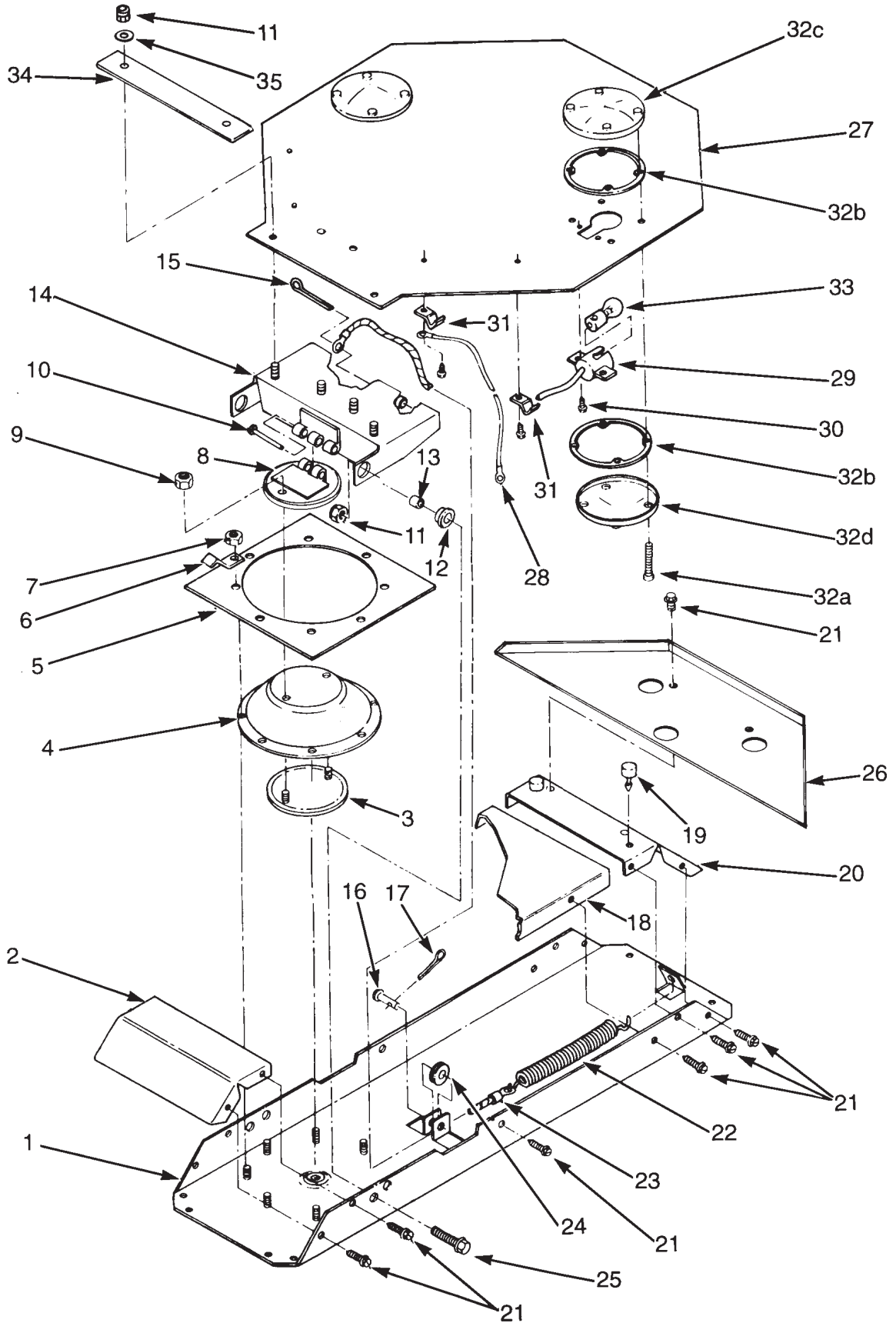


STOP ARM PARTS

AIR STOP ARM





STOP ARM PARTS

AIR STOP ARM

ITEM NO.	SMC P/N	QTY.	DESCRIPTION
	002110		Air Stop Arm Base Assembly
1	000101	1	Base, Painted with Studs
2	000124	1	Front End Cover Plate
3	000171	1	Inner Diaphragm Plate
4	000106	1	Diaphragm
5	002102	1	Diaphragm Retaining Ring
6	000136	2	Jiffy Clamp
7	004048	8	10-32 Hex Nut
8	000170	1	Outer Diaphragm Plate
9	000143	2	¼ x 20 Hex Nut
10	000144	1	Hinge Pin
11	000142	6	Nylon Locknut
12	000166	2	Outer Bearing
13	000176	2	Inner Bearing
14	002167	1	Hinge Bracket
15	002145	1	Cotter Pin, 1/8 x 2 1/2
16	002114	1	Clevis Pin, ¼ x 3/4
17	002112	1	Cotter Pin, 1/16 x 1 1/2
18	002195	1	Air Pan
19	000177	2	Rubber Bumper
20	000125	1	Rear End-Cover
21	000137S	14	#10 x ½" SS Serrated
22	002198	1	Air Return Spring
23	002196	1	Return Cable
24	002197	1	Nylon Pulley
25	000174	2	Bolt, ¼-20 x 3/4
26	007000	1	Windguard
27		1	Blade Choice
28	000183	1	Ground Strap (Strobe Only)
29	005189	2	Socket & Pigtail
30	000192	8	Self-Tapping Screw
31	000198	4	Clamp-Molded
32	00194K	2	Kit, Red Lens (Includes 32a,b,c&d)
32a	000185ST	4	Hex Head Screw
32b	000193SAE	2	Lens Gasket
32c	000194SAE	2	Lens, Red Solid
32d	000194SAE-C	2	Lens, Red Cut-Out
33	001156DC	2	Bulb, Double Contact
34	005045	1	Tab-Blade Mount
35	000104	4	Washer, Nylon Flat