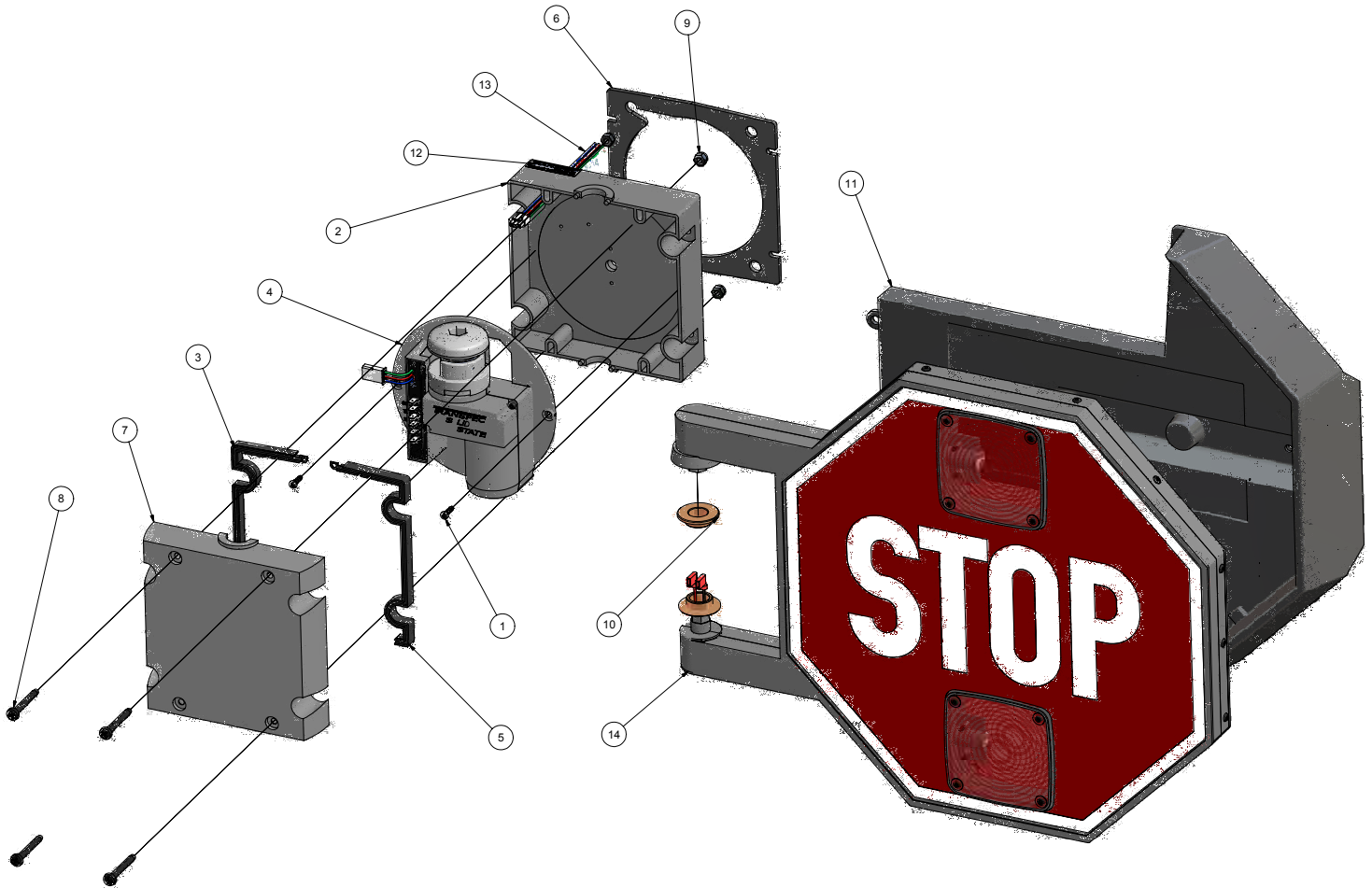


STOP ARM PARTS

MODEL 8000

STOP ARM 2 LIGHT STROBE DIAMOND GRADE & WINDGUARD



Parts List			
ITEM	QTY	PART NUM	DESCRIPTION
1	2	2100-B	Screw - HI-LO w/ Black Finish
2	1	4000	Base - Stop Arm Mechanism
3	1	4001	Gasket - Motor HSG L.H.
4	1	4001-001	Motor Cradle Assembly (Solid State)
5	1	4002	Gasket - Motor HSG R.H.
6	1	4005	Gasket- Stop Arm Base
7	1	4010	Cover - Stop & Crossing Arm Mechanism
8	4	4020	Screw 1/4-20 x 3.25 RD. HD. PHIL. S/S
9	4	4030	Nut - 1/4-20 Hex Nylock
10	2	4170	Bushing - Bronze Oilite
11	1	4254-000	Windguard Next Generation - Stop Arm w/ #4255 Gasket
12	1	4301	Stop Arm Decal for FMVSS Standard
13	1	4321	Wire Harness - Tail Motor 42.5"
14	1	8000-002	Blade Assembly - "2 Light Strobe" Diamond Grade