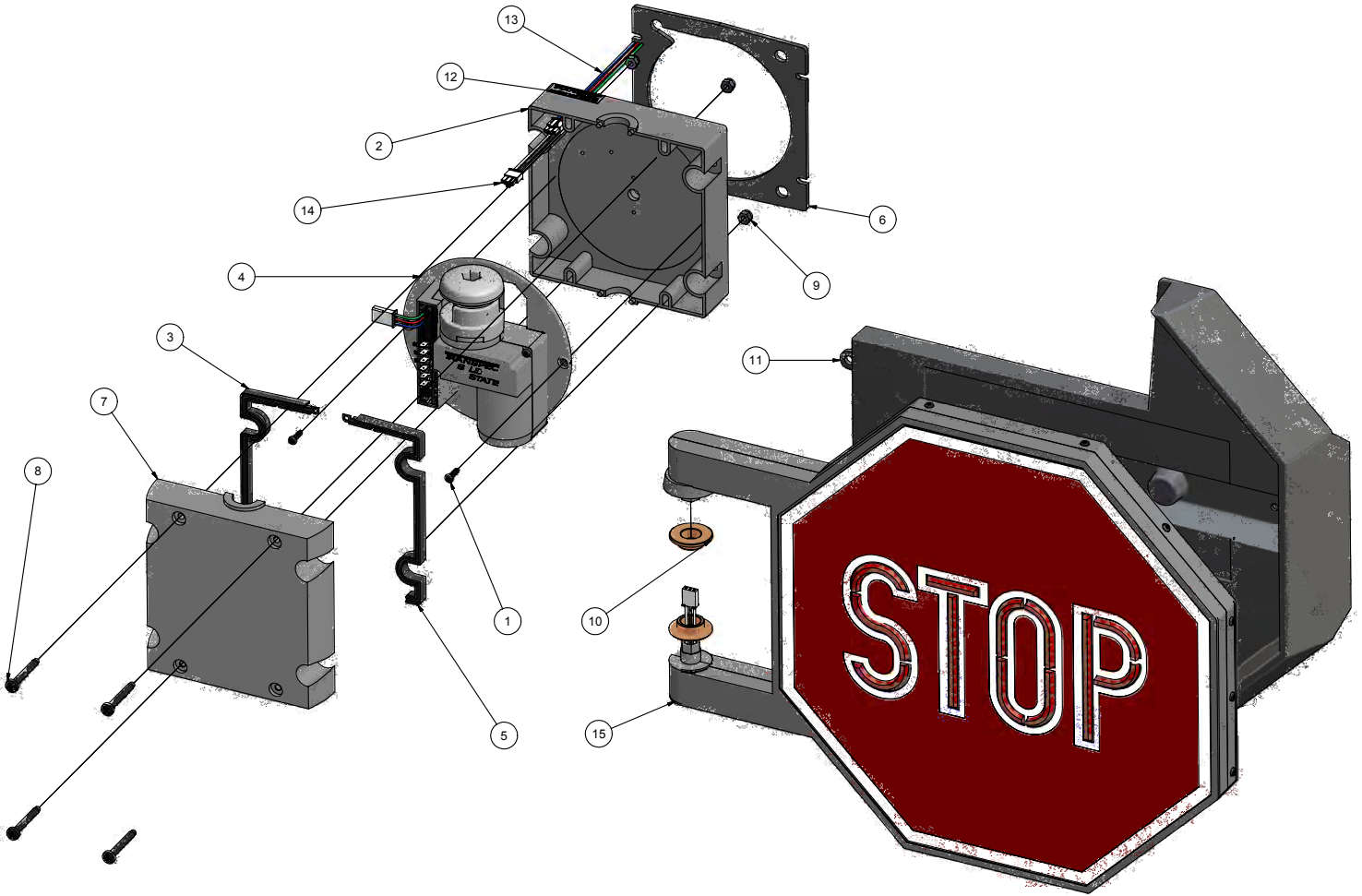


# STOP ARM PARTS

## MODEL 7000

### STOP ARM LED DIAMOND GRADE & WINDGUARD SOLID STATE



KEY #	Part #	DESCRIPTION	QTY
1	2100-B	Screw - Hi-Lo w/Black Finish	2
2	4000	Base - Stop Arm Mechanism	1
3	4001	Gasket - Motor HSG L.H	1
4	4001-001	Motor Cradle Assy (Solid State)	1
5	4002	Gasket - Motor HSG R.H.	1
6	4005	Gasket - Stop Arm Base	1
7	4010	Cover - Stop & Crossing Arm Mechanism	1
8	4020	Screw 1/4-20 x 3.25 RD HD Phil S/S	4
9	4030	Nut - 1/4-20 Hex Nylock	4
10	4170	Bushing - Bronze Oilite	2
11	4254-000	Windguard Next Generation - Stop Arm w/ #4255 Gasket	1
12	4301	Stop Arm Decal for FMVSS Standard	1
13	4321	Wire Harness - Tail Motor 42.5"	1
14	4325	Wire Harness - Tail Light 42.5"	1
15	7000-002	Blade Assy - LED Diamond Grade English	1