



STOP ARM PARTS

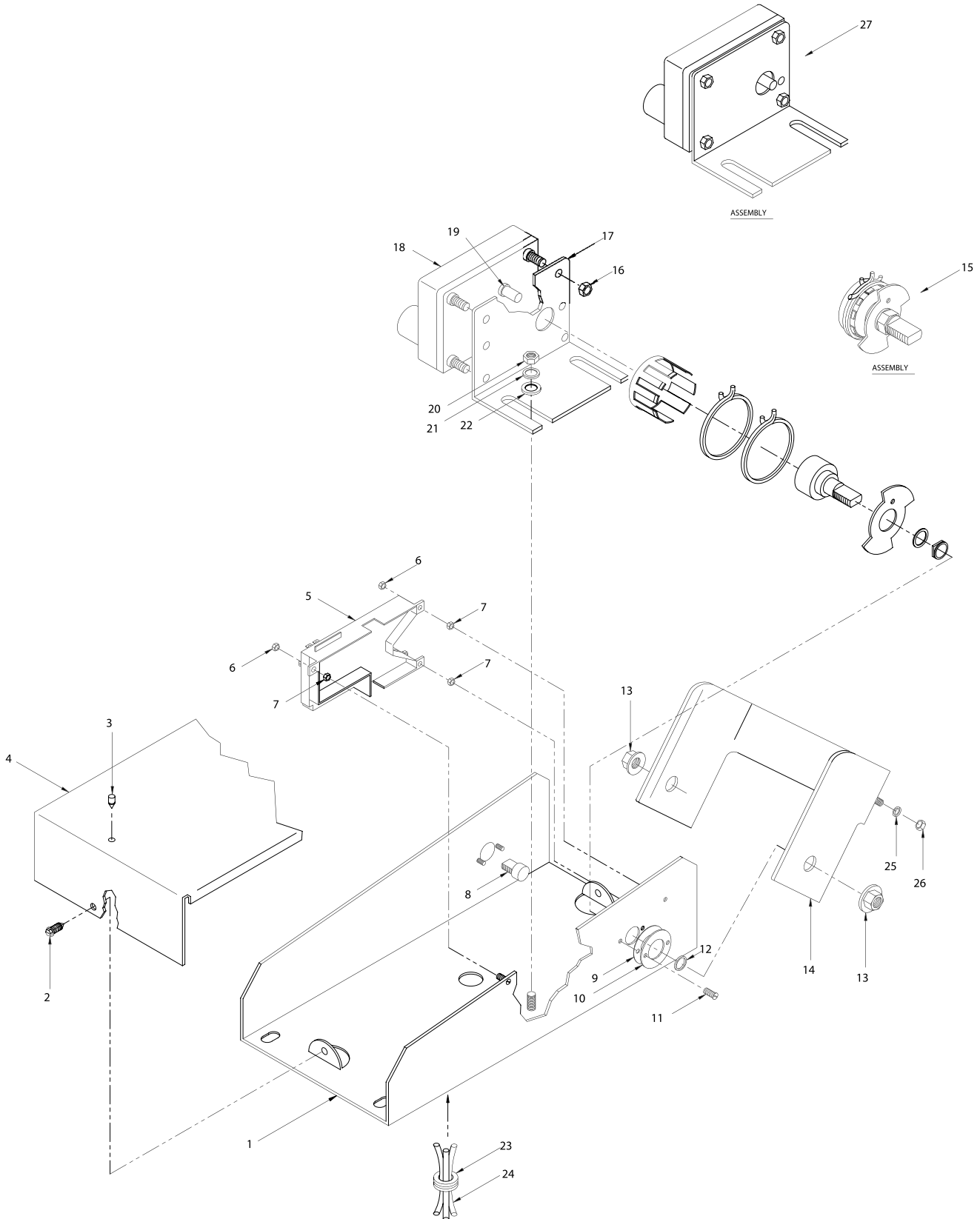
6 SERIES (SMC) SOLID STATE ELECTRIC

SMC Solid State (6-Series) Stop Arm Assemblies

<u>SMC Part Number</u>	<u>Description</u>
006110	Base Assembly, 6-Series Solid State
006200	Stop Arm, Solid State, LED, Hi-Intensity
006400	Stop Arm, Solid State, Ptd Blade, Lights
006460	Stop Arm, Solid State, Ptd Blade, Strobe Lights
006500	Stop Arm, Solid State, EG Reflective, Lights
006560	Stop Arm, Solid State, EG Reflect, Strobe Lights
006900	Stop Arm, Solid State, Hi-Intensity, Lights
006960	Stop Arm, Solid State, Hi-Intensity, Strobe Lights

STOP ARM PARTS

6 SERIES SOLID STATE ELECTRIC





STOP ARM PARTS

6 SERIES SOLID STATE ELECTRIC

ITEM NO.	SMC P/N	QTY.	DESCRIPTION
1	006101	1	Base, Painted with Studs
2	00137S	4	#10 x 1/2" Screw, HxHd Self Tap
3	000177	5	Rubber Bumper
4	005125	1	Painted Cover
5	006120	1	Control Module, Solid State, Encap.
6	005832	7	8-32 Nylock Nut SS
7	000153	3	Spacer Nut, SS
8	005057	1	Hinge Pin, Hardcoated AL
9	006144	1	Gasket
10	006123	2	Bushing
11	006136	4	8-32 x 1/2" Screw, FtHd Octal
12	006041	2	Seal, Bushing-Shaft
13	005122	2	1/2-20 Whiz Nut
14	005168	1	Painted Hinge w/Studs
15	006133	1	Clutch Vane Arm
16	004048	4	10-32 Nylock Nut SS
17	005005	1	Motor Bracket
18	005014	1	Motor
19	005065	1	V-seal
20	000143	2	1/4-20 Nut SS
21	000148	2	1/4" Split Washer SS
22	000147	2	1/4" Washer SS
23	003027	2	Grommet (1 not shown)
24	006117	1	Harness
25	000104	4	1/4" Nylon Washer
26	000142	4	1/4" Nylock Nut
27	005066	1	Motor Bracket Assembly

Replacement Parts Not Shown

001001	1	Strobe Power Pack for 6x6x series
001004	1	Strobe Power Cable for 6x6x series
003013	1	Flasher for 6x2x series
005045	1	Plastic Blade Tab
005126	1	Bracket Adapter
006116	1	Terminal Doubler for 6x6x series
006144	1	Bushing Gasket
007000	1	Windguard
	1	Blade Assm: Select from Catalog