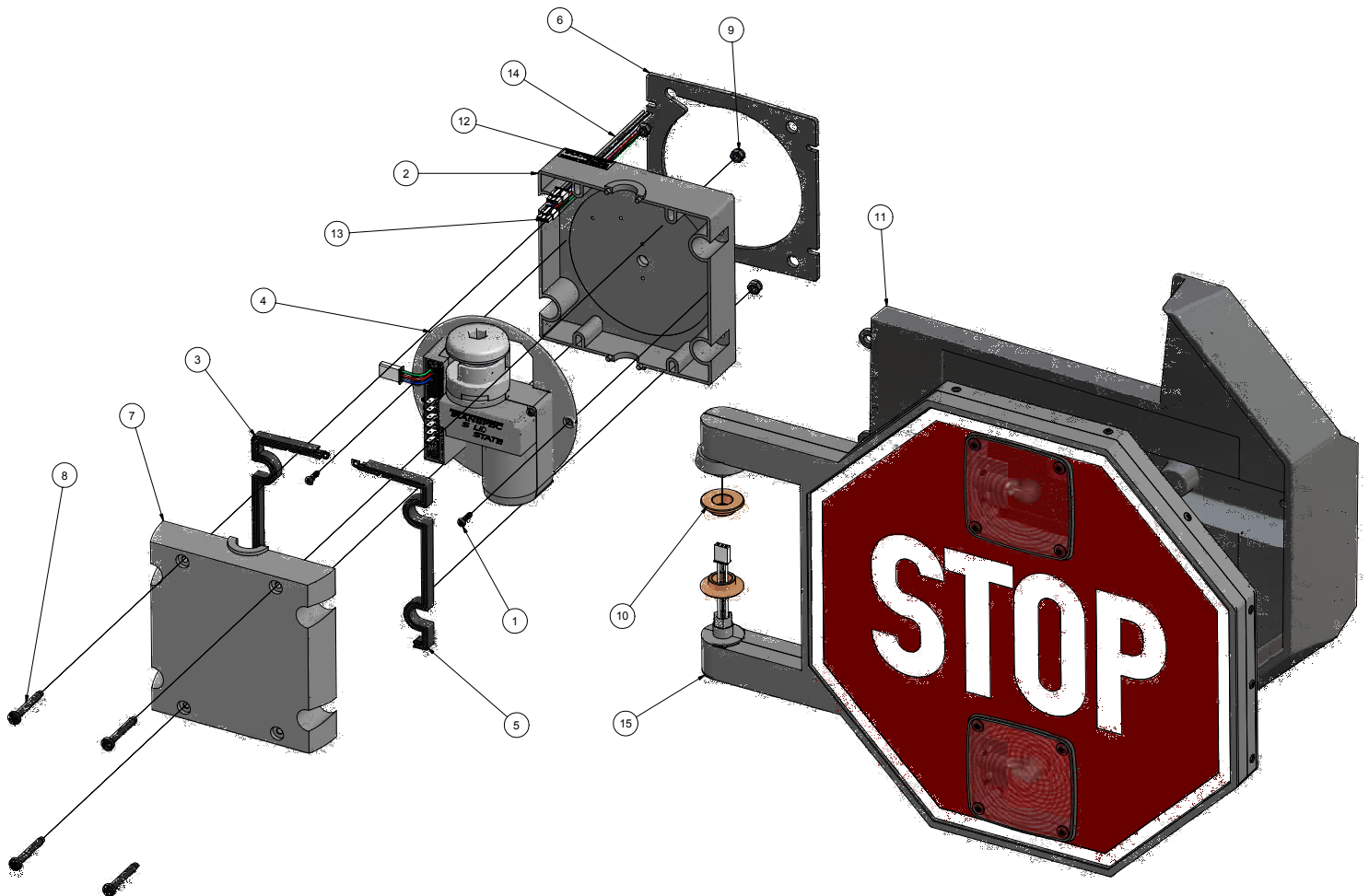


STOP ARM PARTS

MODEL 6000

STOP ARM 2 LIGHT DIAMOND GRADE & WINDGUARD



| KEY # | Part # | DESCRIPTION | QTY |
|-------|----------|--|-----|
| 1 | 2100-B | Screw - Hi-Lo w/Black Finish | 2 |
| 2 | 4000 | Base - Stop Arm Mechanism | 1 |
| 3 | 4001 | Gasket - Motor HSG L.H | 1 |
| 4 | 4001-001 | Motor Cradle Assy (Solid State) | 1 |
| 5 | 4002 | Gasket - Motor HSG R.H. | 1 |
| 6 | 4005 | Gasket - Stop Arm Base | 1 |
| 7 | 4010 | Cover - Stop & Crossing Arm Mechanism | 1 |
| 8 | 4020 | Screw 1/4-20 x 3.25 RD HD Phil S/S | 4 |
| 9 | 4030 | Nut - 1/4-20 Hex Nylock | 4 |
| 10 | 4170 | Bushing - Bronze Oilite | 2 |
| 11 | 4254-000 | Windguard Next Generation - Stop Arm w/ #4255 Gasket | 1 |
| 12 | 4301 | Stop Arm Decal for FMVSS Standard | 1 |
| 13 | 4321 | Wire Harness - Tail Motor 42.5" | 1 |
| 14 | 4325 | Wire Harness - Tail Light 42.5" | 1 |
| 15 | 6000-002 | Blade Assy - 2 Light Diamond Grade | 1 |