



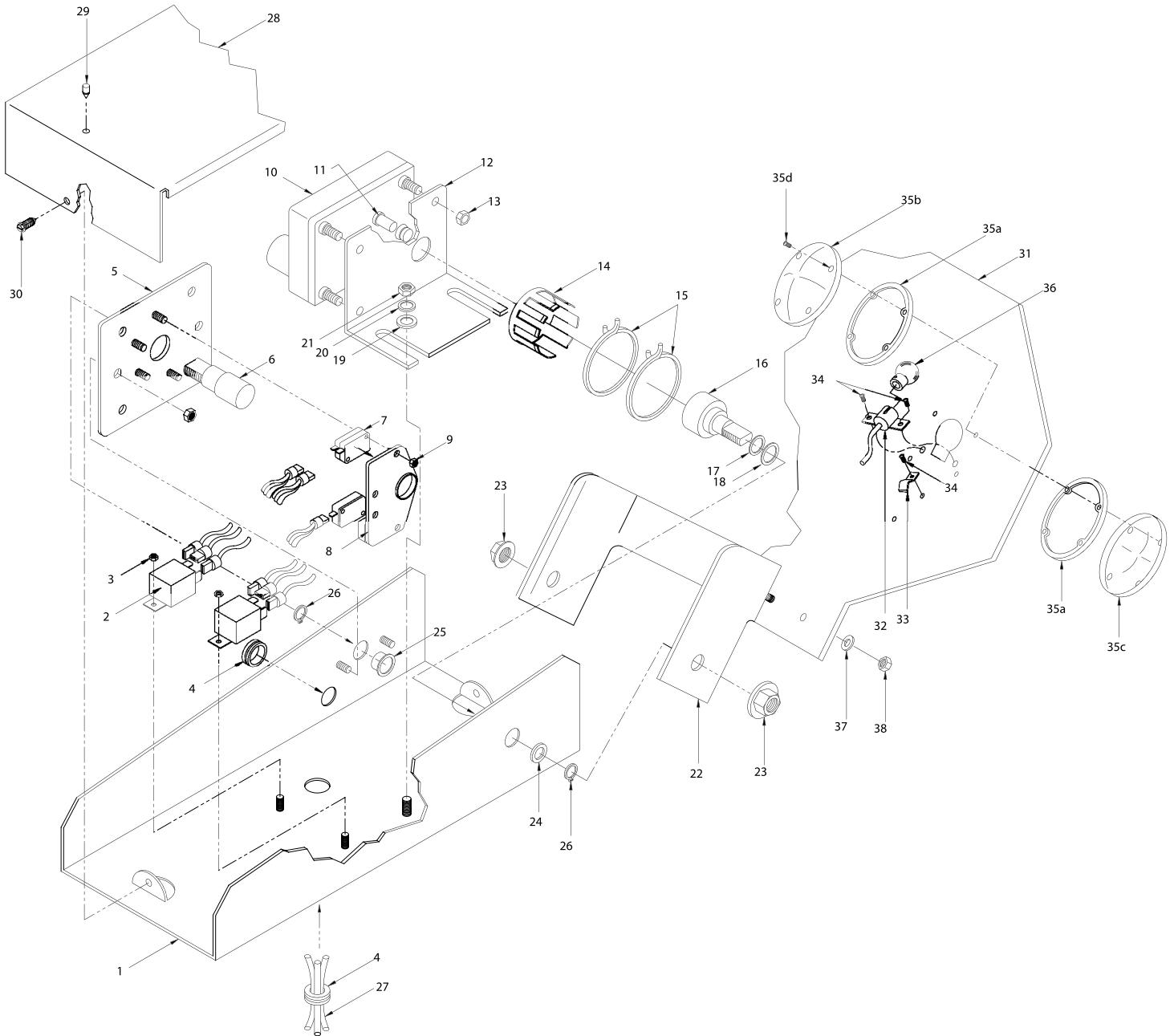
# STOP ARM PARTS

## 5 SERIES ELECTRIC

<b>SMC Part Number</b>	<b>Description</b>
005110	Base Assembly, Electric Stop Arm
005200	Stop Arm, Electric, LED, Hi-Intensity
005400	Stop Arm, Elec, Ptd Blade, Lights
005460	Stop Arm, Elec, Ptd Blade, Strobe Lights
005500	Stop Arm, Elec, EG Reflective, Lights
005560	Stop Arm, Elec, EG Reflect, Strobe Lights

# STOP ARM PARTS

## 5 SERIES ELECTRIC





# STOP ARM PARTS

## 5 SERIES ELECTRIC

ITEM NO.	SMC P/N	QTY.	DESCRIPTION
	005110		5-Series Stop Arm Base Assembly
1	005101	1	Base, Painted with Studs
2	003010	2	Relay
3	005832	4	Insert Hex Nut, Nylon 8-32
4	003027	2	Grommet
5	005006	1	Microswitch Mounting Plate
6	005031	1	Cam - Threaded
7	005007	3	Microswitch
8	005016	1	Cam Positioner Plate
9	005440	4	#4-40 Nylon Hex Locknut
10	005014	1	Motor
11	005065	1	V-Seal
12	005005	1	Motor Bracket
13	004048	4	Hex Nut
14	005003	1	Clutch, Plastic
15	005030	2	Roto Clip
16	005002	1	Slip Clutch, Aluminum
17	005032	1	O-Ring
18	005176	1	Bushing, Nylon
19	000147	2	Washer, Flat ¼"
20	000148	2	Lockwasher
21	000143	6	Insert Locknut 00
22	005168	1	Hinge Bracket
23	005122	2	Washer HD Whiz Nut
24	005164	1	Washer, SS, 1" O.D.
25	005166	1	Bushing, Nylon
26	005165	2	Snap Ring
27	005012	1	Wiring Harness
28	005125	1	Cover
29	000177	1	Rubber Bumper
30	000137S	2	#10 x ½" SMS Serrated
31		1	Blade Choice (contact distributor)
32	005189	2	Socket & Pigtail
33	000198	4	Tube Clamp – Molded
34	000192	8	Screw, Self-Tapping
35	000194K	2	Lens Kit, Red (inc. following parts)
35a	000193SAE	4	Lens Gasket
35b	000194	2	Lens, Red Solid
35c	000194-C	2	Lens, Red Cut-Out
35d	000185ST-F	8	Screw, Hex Head
36	001156DC	2	Bulb, Double-Contact
37	000104	4	Flat Washer, Nylon
38	000142	4	Locknut, Nylon



# STOP ARM PARTS

## 5 SERIES ELECTRIC

### Replacement Parts Not Shown

005008	1	Clutch
005029	1	Clutch and Motor Assembly
005039	1	Microswitch Arm and Harness
005126	1	Adapter, Windguard
007000	1	Windguard