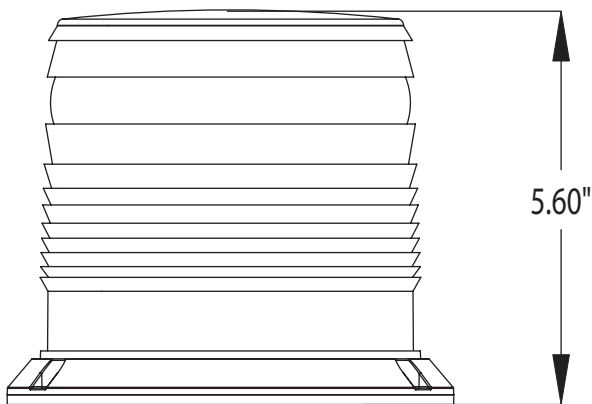


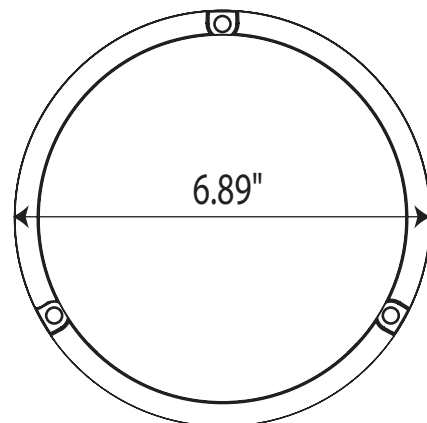
SOUNDOFF- 5000 BEACON



Dimensions



4" Dome Overall Height



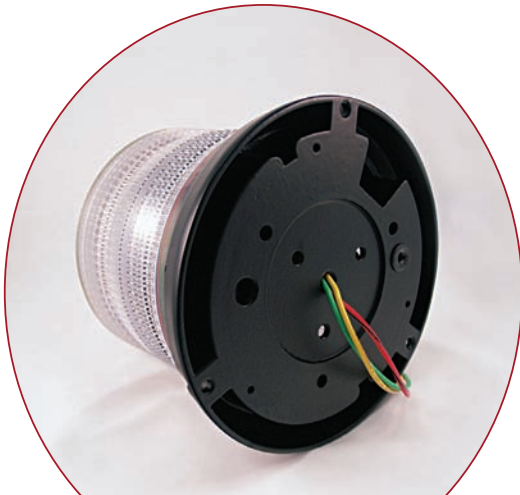
Diameter of Base

SOUNDOFF- 5000 BEACON

Our new low cost Economy 5000 Series beacon is great for all types of vehicle fleets.



Waterproof design with a black powder coat cast aluminum base. Includes 16" 3-wire leads.



Available in a 4" dome height in Amber or Clear. A perfect choice for transit & school bus use.

SoundOff Signal

Benefits

- Our newest beacon offering with a lower price point that is Class 2 rated and great for all types of bus & commercial vehicle fleets
- Be Seen and Be Safe with 360 degrees of bright strobe warning power that clearly alerts other drivers of your vehicle's presence
- Beacon features an O-ring seal between dome & base to provide a weather tight seal
- Self-contained with two user selectable flash patterns available: Double or Quad flash. Double Flash has 70 f.p.m. while Quad has 100 f.p.m.
- Double Fresnel Polycarbonate lens design - optics are molded into the inner *and* outer lens for better and brighter light distribution
- Permanent Mount base is made from strong cast aluminum in a black powder coat finish
- Made with a field replaceable Xenon strobe "u" tube
- Bright 15 watt output (12 joules)
- 10-30 Vdc with 1.5 amp current draw
- Available in 4" dome height only in Clear or Amber

Warranty

1 Year No Hassle Warranty on both strobe tube and electrical components

Part Numbers

Amber 4" Dome: 5157LFA

Clear 4" Dome: 5157LFC