



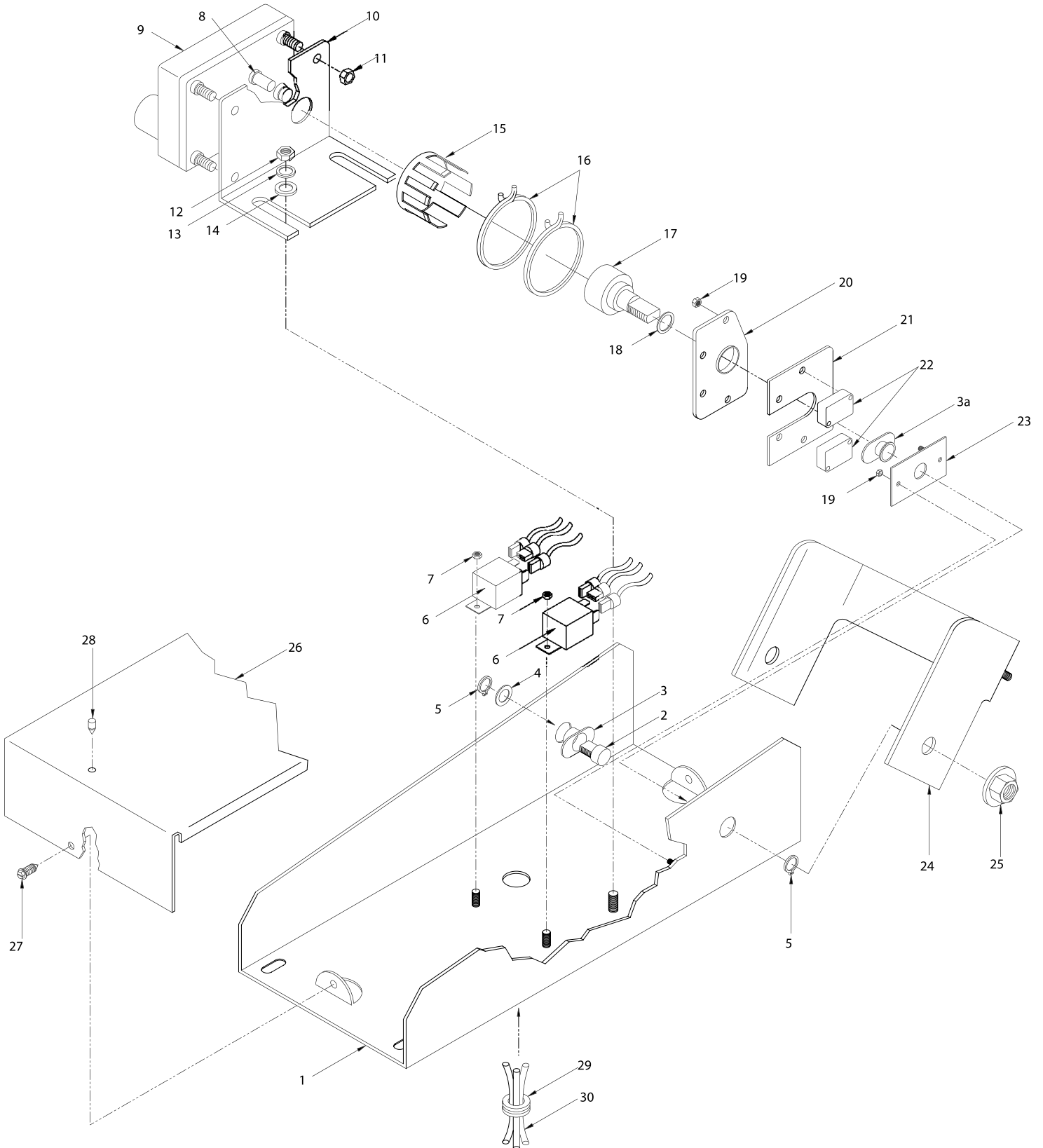
CROSSING ARMS

5 SERIES ELECTRIC

| SMC Part Number | Description |
|----------------------------|--|
| 058100 | Assembly, Elec #58110 Base, #58150 Blade |
| 058103 | Assembly, Elec #58110, #58151 Blade |
| 058105 | Assembly, Elec. #58106 Base, #58150 Blade |
| 058106 | Base Assembly, Electric, Quick-Disconnect |
| 058110 | Base Assembly, Electric 5-Series |
| 058150 | Assembly, Figure-8 Blade, Yellow Tip |
| 058153 | Assy-5-Series Fig-8 w/Plate, 5-Ser, Freightliner |
| 058300 | KIT-#58106, #68151 with Bracket, Frtliner |
| 058500 | Assy, #58110 Base, #68150 Blade |
| 058600 | Assy, #58106 Base, #68150 Blade |

CROSSING ARMS

5 SERIES ELECTRIC





CROSSING ARMS

5 SERIES ELECTRIC

| ITEM NO. | SMC P/N | QTY. | DESCRIPTION |
|----------|---------|------|---------------------------------|
| 1 | 058101 | 1 | Base, Painted w/Studs |
| 2 | 005057 | 1 | Hinge Pin, Inverted |
| 3 | 005176 | 1 | Bushing, Nylon with Tab |
| 3a | 005166 | 1 | Bushing, Nylon, no Tab |
| 4 | 005164 | 1 | Washer, SS, 1" O.D. |
| 5 | 005165 | 2 | Snap Ring |
| 6 | 003010 | 2 | Relay |
| 7 | 005832 | 4 | Insert Hex Nut, Nylon 8-32 |
| 8 | 005065 | 1 | V-Seal |
| 9 | 005014 | 1 | Motor |
| 10 | 005005 | 1 | Motor Bracket |
| 11 | 004048 | 4 | Hex Nut |
| 12 | 000143 | 2 | Insert Locknut |
| 13 | 000148 | 2 | Lockwasher |
| 14 | 000147 | 2 | Washer, Flat, ¼" |
| 15 | 005003 | 1 | Clutch, Plastic |
| 16 | 005030 | 2 | Roto Clip |
| 17 | 005014 | 1 | Clutch Driver/Cam, Threaded |
| 18 | 005032 | 1 | O-Ring |
| 19 | 005440 | 4 | #4-40 Hex Nut, SS |
| 20 | 005058 | 1 | Plate, Flat - Inverted |
| 21 | 005038 | 1 | Heater |
| 22 | 005007 | 2 | Microswitch |
| 23 | 005016 | 1 | Plate, Switch Mounting/Inv |
| 24 | 005168 | 1 | Hinge, Threaded with Studs |
| 25 | 005122 | 2 | ½-20 Hex Washer Hd Whiz Nut |
| 26 | 058125 | 1 | Cover, 5-Series X/A |
| 27 | 000137S | 2 | 10 x ½ Hex Washer Hd Screw |
| 28 | 000177 | 1 | Rubber Bumper |
| 29 | 003027S | 1 | Grommet |
| 30 | 005019 | 1 | Harness, Base Quick-Disc Wiring |

Replacement Parts Not Shown

| | | |
|--------|---|---------------------------------|
| 000104 | 4 | Washer ¼" Nylon Flat |
| 000142 | 4 | Nylon Locknut |
| 005042 | 1 | Wire Harness Replacement (Comp) |
| 005062 | 1 | Clutch Assembly |
| 005063 | 1 | Clutch and Motor Assy |