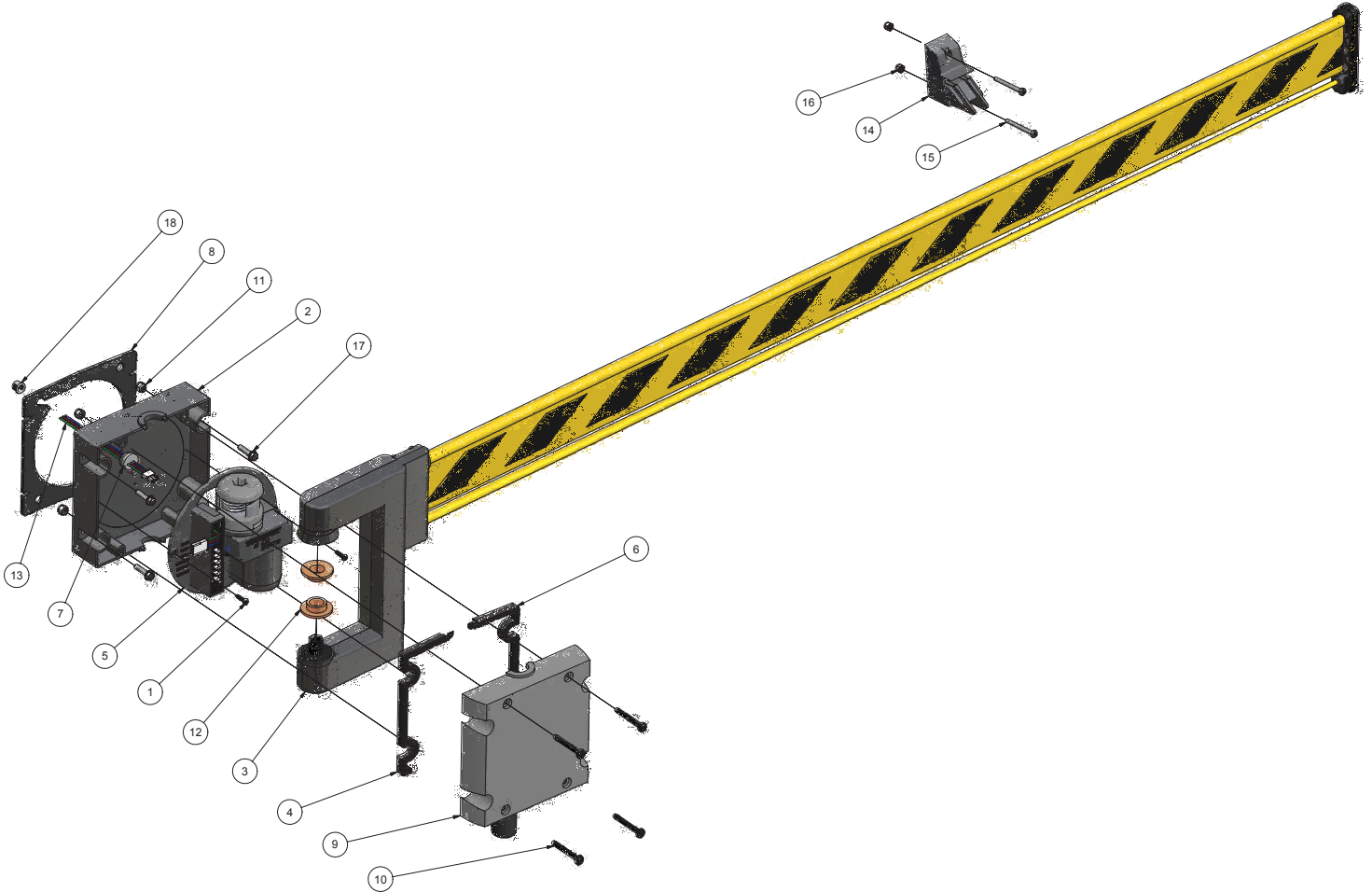


# CROSSING CONTROL ARMS

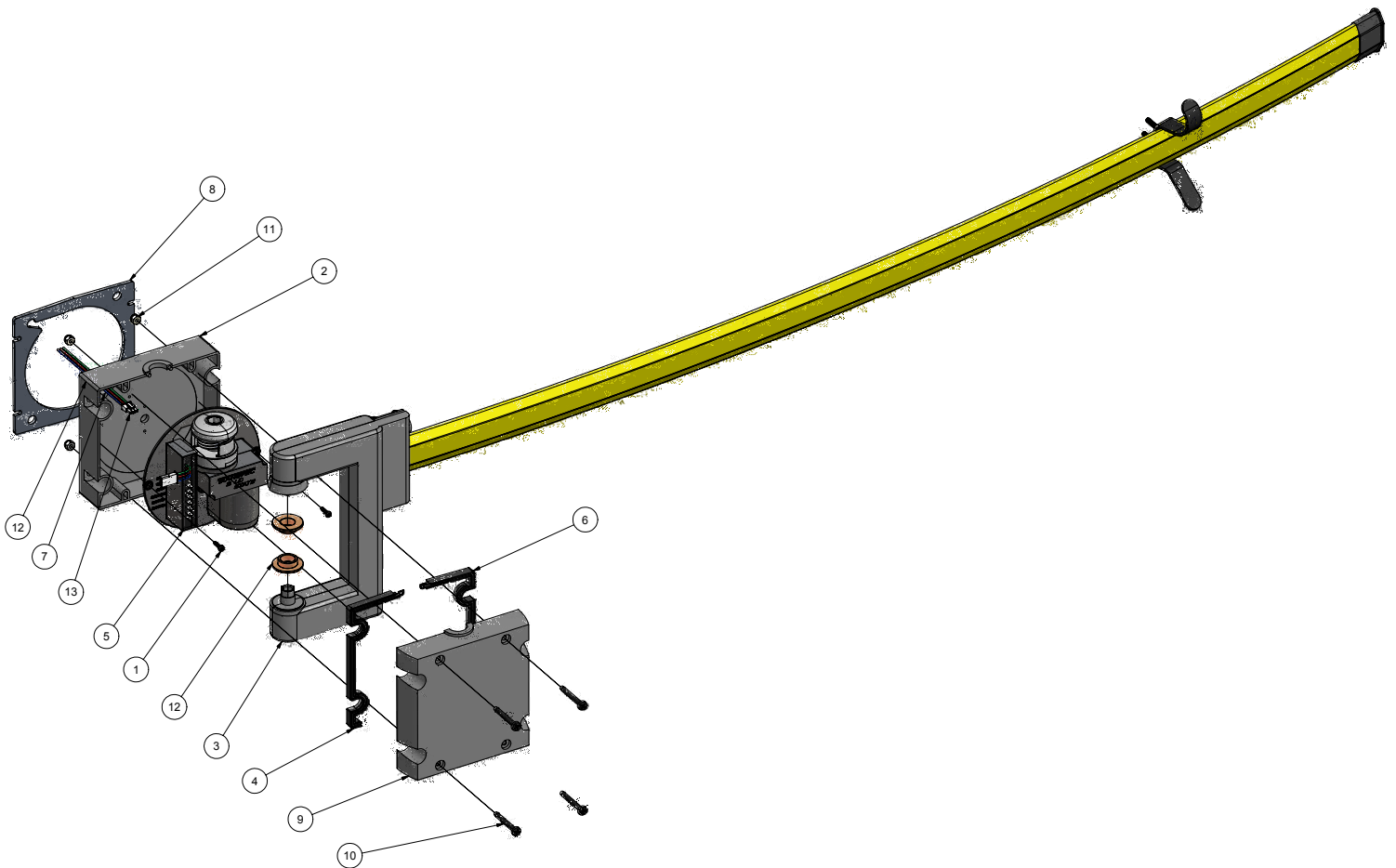
## MODEL 4000 DOUBLE POLE WITH EXTRUSION



Parts List			
ITEM	QTY	PART NUM	DESCRIPTION
1	2	2100-B	Screw - HI-LO w/ Black Finish
2	1	4000	Base - Stop Arm Mechanism
3	1	4000-016	Arm Assembly (Double Pole w/Extrusion and Bracket)
4	1	4001	Gasket - Motor HSG L.H.
5	1	4001-001	Motor Cradle Assembly (Solid State)
6	1	4002	Gasket - Motor HSG R.H.
7	1	4004	Grommet - Mech. Base
8	1	4005	Gasket - Stop Arm Base
9	1	4010-001	Cover Assembly - Motor Mechanism Base (Cross Arm)
10	4	4020	Screw 1/4-20 x 3.25 RD. HD. PHIL. S/S
11	4	4030	Nut - 1/4-20 Hex Nylock
12	2	4170	Bushing - Bronze Oilite
13	1	4321	Wire Harness - Tail Motor 42.5"
14	1	4511	Guide Block - Crossing Arm
15	2	4541	Screw - 10-24 x 2.00 Black
16	2	4545	Nut - Locking 10-24 w/Nylon Insert
17	4	4547	Screw 1/4 Type 23 x 1 HX HD BLK
18	1	4584	Bushing - Insulating Wire

# CROSSING CONTROL ARMS

## MODEL 4000 CURVED POLYROD CROSSING ARM ASSEMBLY



Parts List			
ITEM	QTY	PART NUM	DESCRIPTION
1	2	2100-B	Screw - HI-LO
2	1	4000	Base - Stop Arm Mechanism
3	1	4000-500	Curved Polyrod Crossing Arm Bracket Assembly
4	1	4001	Gasket - Motor HSG L.H.
5	1	4001-001	Motor Cradle Assembly (Solid State)
6	1	4002	Gasket - Motor HSG R.H.
7	1	4004	Grommet - Mech. Base
8	1	4005	Gasket - Stop Arm Base
9	1	4010	Cover - Stop & Crossing Arm Mechanism
10	4	4020	Screw 1/4-20 x 3.25 RD. HD. PHIL. S/S
11	4	4030	Nut - 1/4-20 Hex Nylock
12	2	4170	Bushing - Bronze Oilite
13	1	4321	Wire Harness - Tail Motor 42.5"



# CROSSING CONTROL ARMS

## MODEL 4000

### SAFETY CROSS™ MODEL 4000 PARTS LIST

1	4000-002	Arm Assembly (Double Pole w/Extrusions)
2	4000-003	Arm Assembly (Double Pole)
3	4000-004	Arm Assembly (Single Pole)
4	4000-016	Arm Assembly (Double Pole w/Extrusion & Bracket)
5	4000-017	Arm Assembly (Double Pole w/Bracket)
6	4000-018	Arm Assembly (Single Pole w/Bracket)
7	4000-020	Extrusion Assembly w/stripping
8	4003	Plug - Rubber
9	4160	Drive Arm
10	4170	Busing - Bronze
11	4500	Bracket - Front
12	4510	Bracket - Rear
13	45056	Reflective Striping
14	4501	Bracket - Offset Front
15	4502	Bracket - Offset Rear