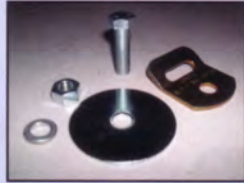


# EZ-ON PRODUCTS

## ACCESSORIES

**A**

**TETHER KIT** (Item #100H) This kit is to be used for E-Z-ON® vehicle tether mounts and E-Z-ON® Floor mounts for passengers 20-168 lbs. in all upright E-Z-ON® Vests, 86 Y Universal Harnesses (Kid Y™ Harness 30-80 lbs). Kit includes: 7/16" bolt, 2-3/8 washer, lock washer, tether bracket (swivel), nut. E-Z-ON® Floor Mount includes two kits.

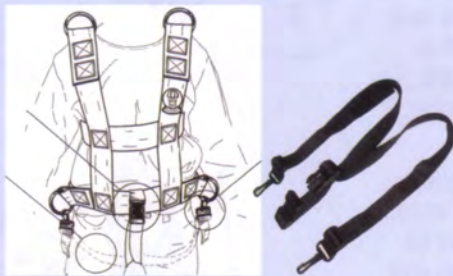


**B**



**CHEST CLIP** (Item No. 100CC) This E-Z-ON® durable plastic chest clip is perfect for 86Y/1086 Harnesses to help keep harness straps in the right position while traveling. Keep in center of the passenger's chest for safety.

**C**



**CROTCH STRAPS** (Item # 100 CRP) Help keep the E-Z-ON® VEST properly positioned low over the child's hip. Snap-on portable or sewn-on 100 CR models are available.

**D**

**ZIPPER INSERTS** (Item # 100AZ) Just zip into any single zipper E-Z-ON® VEST to adjust vest size for seasonal clothing and growth. Four inserts available for our XXS, S, M and LG E-Z-ON® VESTS.



**E**

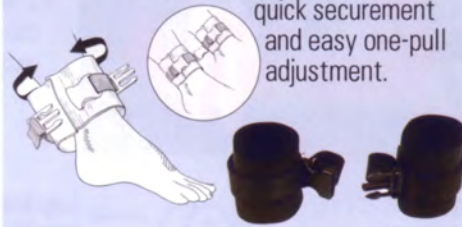
### WRIST RESTRAINTS

(Item # 100WRP) Wrist restraints clip to the rings on the hip straps of the E-Z-ON® VEST. Each restraint features a push-buckle closure with one-pull adjustment for quick securement.



**F**

**ANKLE RESTRAINTS** (Item # 100AR) Three push-buckle closures for quick securement and easy one-pull adjustment.



**G**

### UPPER ARM RESTRAINTS

(Item #100UA) Sewn in arm restraints feature push-buckle closures with a one-pull adjustment for quick securement. These help deter unwanted arm movements that can endanger others. This is considered a less restrictive restraint. Portable Upper Arm restraints #100UAP are available.

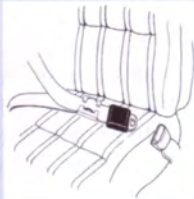


# EZ-ON PRODUCTS

## ACCESSORIES

**H**

**LOCKING CLIP** (Item # 4012) Use to combine a vehicle's shoulder strap and lap belt to thread through the belt loops on E-Z-ON® products.



**L**

### FIXED END SEAT BELT

(Item #45-1) Perfect for school bus seats on approved frames. Custom seat belts, anchoring and hardware are available to order.



**I**

**BUCKLE GUARD** (Item # 100BG) Child-resistant safety cap helps deter unwelcome opening of standard push-button closures on seat belts, harnesses and safety seats.



**M**

### CPS TRAINING BAG FOR SCHOOL BUSES

(Item #100CPS-BLK) Your NHTSA CPS Certification number and instructor's name allows you to purchase these E-Z-ON® training bags for instructional purposes.

These products come with an attractive black



and yellow vinyl duffel bag to carry these products: E-Z-ON® Vest® Models: New 225 Vest, 101 Zipper Vest (small w/crotch straps) Harnesses: 1086 New CamHarness™, Model #543 New KidCam™, Accessories: Safe Cut belt cutter 1004, 1 set of Wrist Restraints 100WRP.

**J**

### SAFE CUT WEBBING CUTTER

(Item #1004) Quickly and safely cut seat belts, harnesses and tie-downs in emergency situations. Durable polycarbonate with a replaceable blade is bright yellow for easy locating. Velcro mounts to dashboard or any other location you prefer. An emergency demands the durable SAFE CUT!



**K**

### TRAINING BAG FOR FAMILY VEHICLES

(Item #100CPS-BK) Your CPS Certification number and instructor's name allows you to purchase these E-Z-ON® training bags for instructional purposes. These products come with an attractive blue and white vinyl duffel bag to carry these products: E-Z-ON®



Vest Models: New 203 and Modified Mini-Push Button M203, Harnesses: New Kid Y™, Vest Mounts: New Tether Mount 100TC, New Floor Mount 100FM, New Wheel Chair Mount 100WC, Accessories: Portable crotch strap 100CRP.

**N**

### BUS TETHER KIT

(Item #100 H-L) Anchor E-Z-ON® Vests and Harnesses 30-80lbs on school buses that are FMVSS 210 approved. (Reinforced seat frames). Use tether bracket on existing seat belt hardware under the seat frame. See School



Bus Tether Mount page 11. Kit includes: E-Z-ON® durable tether bracket (swivel).